

SAFWAY

Step onto Safway SL Frame System Step into Increased Productivity



**NO INSIDE CROSS BRACES TO WORK
AROUND INCREASES WORKER PRODUCTIVITY.**

Safway SL Frame System Increases Productivity



No INSIDE CROSS BRACES -

The unique Safway SL Frame System design increases worker productivity. Because there are no cross braces on the inside of the scaffold, workers have unobstructed access to the wall surface.

INTEGRATED SYSTEM -

Provides a fully planked and guardrailed platform at each level (lift) increasing worker protection and productivity. Since every level is fully decked there is no need to duplicate the effort of moving decks.

PLATFORM ACCESS -

Moving from level to level is quick and easy with a built-in ladder and hatch.

FEWER COMPONENTS -

The Safway SL Frame System was designed to be user friendly. It has fewer components increasing productivity by decreasing erection time and requiring less storage space.

ALL STEEL CONSTRUCTION -

Components are hot-dipped galvanized to provide years of service.

Guardrails- Integrated scaffold system provides guardrails and midrails at the required height.



End Panels - Designed to be quickly installed, end panels provide both midrails and top rails at the ends of intermediate scaffold runs.

Safway SL Frame System - Unique Design



Flush Deck - Planks are integrated onto the studs producing flush decks thus minimizing tripping hazards. Rigid deck construction reduces deflection.



Sidebrackets - Vertically adjusted side brackets allow extensions two planks wide to be added at any height.

Wider Decks - Unlike other similar European frame systems the Safway SL Frame System decks are three planks wide increasing work area and worker efficiencies.

Internal Access - The internal access system allows workers access without requiring them to climb over handrails and guardrails.

Rigid Design - The Safway SL Frame System was designed for exceptional rigidity.

Visually Inspect - The galvanized steel planks can be inspected with a simple visual inspection unlike some wood plank, where damage can be internal.

Wide Ladder Width - Access is more convenient with the wide ladder. 25% wider than competitive systems.

Tying - Unlike competitive systems, the Safway SL Frame System can be tied to the building

using the unique eye bolt and tie tubes. The eye bolt used for tying leaves a small hole as opposed to other scaffold tying systems.

Adaptable - The Safway SL Frame System fits many types of structures. The Scaffold can easily be erected on sloped surfaces with a combination of the three standard base frame heights and screwjacks.

Internal Ladder System - The internal level-to-level ladder system complies with OSHA and CAL OSHA codes and eliminates the necessity to provide a separate worker access.

Diagonal Braces - This system requires fewer diagonals because the integrated decking provides more stability than other scaffold systems.





Toeboards - The interlocking pin design integrates toeboards with the scaffold structure.

Access - The internal access system meets all OSHA and CAL OSHA codes and allows internal access from one level to another.



Flush Decking - The unique planking system allows the planks to be integrated into the frame creating a platform.

Integrated Design - The integrated system requires that each level is fully planked and guardrailed for increased worker protection and productivity.

Integrated Toeboards - The Safway SL Frame System has integrated toeboards with an interlocking pin design.

Spring Loaded Latch - The latch holds the access ladder securely up and out of the way when not needed, and easily releases the ladder for access when required.

Large Walk-Through Area - The two meter (six foot six inch) height between platform levels allow more headroom and walk-through area.

Erection / Dismantling - The unique Safway design ensures workers are always standing on "locked in" plank when erecting and dismantling the scaffold.

Hatch Door - The Safway SL Frame System hatch door is aluminum. Unlike the wood door of competitive systems the Safway hatch door was designed for increased life and durability.

Little Details make a Big Difference



Pivot Pins are self locking and are integrated onto the horizontal reducing the number of loose components.



The Spring Loaded Latch easily releases ladder when needed and securely holds ladder up when not in use.



Short Tie Tubes do not extend into the walkway area for unobstructed head room.

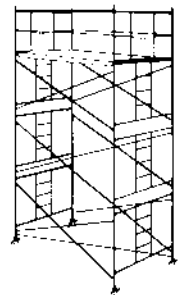
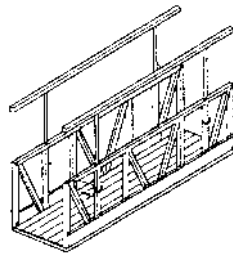
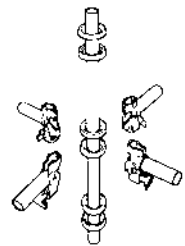
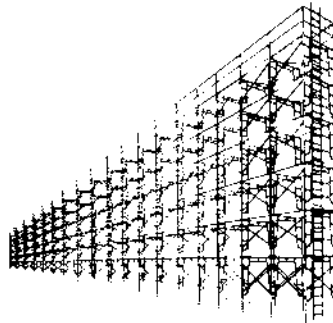


The unique Tie Tube and Eye Bolt design ties the scaffold securely to the building while minimizing the amount of refinishing needed. When the tie tube and eye bolt are removed, it leaves a small 5/8" hole rather than the large voids caused by other tying systems.

Safway SL Frame System

The Complete Safway Line

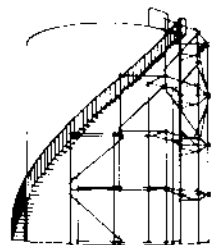
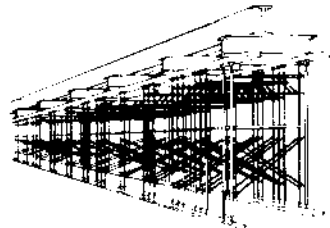
- Sectional Scaffold
- Systems™ Scaffold
- SafMax™ Scaffold
- SL Frame System™ Scaffold
- Power and Manual Swings
- Rolling Towers
- Tube & Clamp Scaffold
- Canopies/Overhead Protection
- Fall Protection and Confined Entry Equipment
- Material Hoisting Equipment
- Engineered Access Solutions
- Training Services
- Project Management Services



All drawings in this brochure are for illustrative purposes only.

This brochure is intended for general information only. Because of the many variables which affect the performance of this product line, some of the information in this brochure may not apply. For specific applications, contact Safway.

Note: Erection, use, maintenance and disassembly must conform to current Safway instructions as well as ALL federal, state and local regulations. Copies of complete safety guidelines for these and other products are available from Safway or your Safway Dealer without charge.



SAFWAY SERVICES, INC.

N19 W24200 Riverwood Drive
Waukesha, WI 53188
(800) 558-4772 ■ (262) 523-6500
Fax: (262) 523-9808

www.safway.com

DISTRIBUTED BY