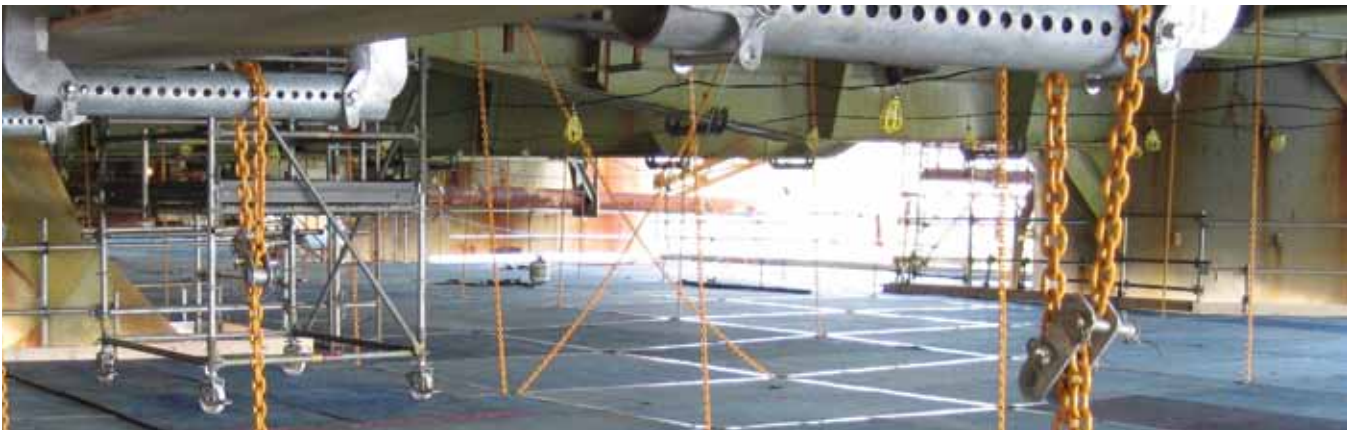




Offshore





Offshore Access

Get under, over and in-between.

Photos: Safway's supported, suspended and ground-based products are used for offshore maintenance and repair.

Offshore maintenance is no easy task. Safway scaffolds reached new heights with this offshore rig in Canada, safely providing access for maintenance and repair.

I would like to take this opportunity on behalf of myself and Transocean to thank you, your management and your workers for an exceptional job on [this] refit project.

The QuikDeck® system was a hit with all parties involved, and it impressed many high ranking individuals in the Transocean network. I'm sure this is something that will be entertained again in the future.

The quality of the scaffolding that was erected was second to none and was all completed in a timely and safe fashion.

I look forward to the opportunity of working with yourself and Safway again in the future. Thank you once again for providing us with such a professional service.

Scott Glynn
Scaffolding Superintendent
Transocean

The Access Advantage

When it comes to tackling access challenges like offshore rigs, Safway is used to jumping right in.

Pennecon, the rig's general contractor, needed a product that would enable access for maintenance work on the underside of the rig.

With the help of the open, stable platforms of Safway's QuikDeck® Suspended Access System, as well as the always-reliable SafLock™ System Scaffold, rig maintenance could begin.

"I have been in the construction industry for over 25 years, and the QuikDeck® system is one of the best scaffolding systems I have seen."

Jerry Costello
Project Manager, Pennecon Energy

Working Together

Many of Safway's products were paired together for the rig project, creating custom scaffold solutions and allowing optimal proximity to surfaces in need of repair or maintenance.

Access equipment for the rig incorporated Safway's supported, suspended and ground-based scaffolds, including:

- QuikDeck®
- SafLock™ System Scaffold
- Tube & Clamp Scaffold
- High-capacity personnel hoists

Getting Started

Thanks to innovative equipment design and dedicated project management, Safway helped cut the rig's suspended scaffold installation time in half.

After extensive, on-site scaffold training provided by Safway, a QuikDeck® starter platform was built on a nearby barge and then floated under the rig.



“The QuikDeck® system was exactly what Pennecon needed for our project. The system allowed Pennecon to execute the work below the main deck and pontoon areas concurrently without impact to schedule or worry of dropped objects from above.”

Jerry Costello – Project Manager
Pennecon Energy

Once the barge was in place, rig winches lifted the larger-than-normal starter platform to its working location in the moonpool area of the rig.

With the unique assembly capabilities of QuikDeck®, the remainder of the platform was built in the air from the starter platform.

To ensure continuous safety and jobsite progress, Safway provided 24-hour field service and erector support for the duration of the installation.

Access without Excess

Safway scaffolders safely erected approximately 42,000 sq. ft. of QuikDeck® under the rig. SafLock™ scaffolds included Tube & Clamp for additions, modifications, cantilevers, suspended scaffolds and ties.

Equipment provided access for a variety of repairs and maintenance work including:

- Replacement of catwalks, heat traces, derricks, cable trays, cables, welds and pipe supports
- Blasting and painting
- Tower access to the many insulation, electrical and structural areas on the underside of the rig
- Access for work inside the caissons

- Movement of approximately 600 tradespeople around the clock to and from the top of the rig through high-capacity, dual-car personnel hoists, supplied by Safway's Specialized Product Division

Job-Specific Solutions

Besides providing all-around access for a remote jobsite, Safway created custom solutions to ensure Pennecon maintained deadlines and stayed within budget.

Challenge: Standard QuikDeck® beam clamps were not able to connect to channels for installation.

Solution: Safway's Specialized Product Division developed custom adapters to allow beam clamps to be suspended from two channels. The alternative would have meant welding 500 pad eyes under the rig – the custom adapter saved Pennecon and Transocean thousands of dollars.

Challenge: Material movement around the rig was time consuming.

Solution: Safway provided carts that cut the material movement time in half for the entire removal process.



Safway Personnel Hoists Support from the Ground, Up

- Quickly moves crews and material
- Lifting speed: 175' per minute
- Can transport 6,000 lbs. of material or 30 personnel with a single car

QuikDeck®

Features

- Basic components are easy to handle and assemble
- Flat, open work environment with fewer tripping hazards
- Configures to fit almost any shape or size
- Readily accepts containment and helps resist wind loads

Applications

- Offshore rigs and platforms
- Maritime vessels
- Boiler applications and maintenance
- Temporary stages and walkways
- Bridge construction, maintenance and repair
- Atriums



Photo: QuikDeck® in use for maintenance and repair of an offshore platform in Alaska.

Safway Services, LLC

Corporate Headquarters
N19 W24200 Riverwood Drive
Waukesha, WI 53188
Toll free: (800) 558-4772
Telephone: (262) 523-6500

Safway Services Canada, Inc.

11237 – 87 Avenue
Fort Saskatchewan, Alberta T8L 2S3 Canada
Toll free: (866) 842-4424
Telephone: (780) 992-1929

For a list of branch locations in the United States and Canada, visit our website at www.safway.com